

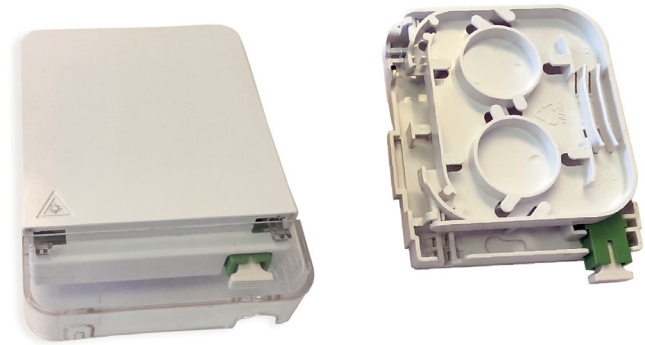
## FTTH Wall outlet - 1 core

### Field of Application

Designed for FTTH applications, the Wall Outlet is used to terminate optical cables to pigtails at the subscribers premises. It is mounted on the wall. The cable is fed to the wall outlet from the top, bottom side or from the back. A patchcord leads from the wall outlet to the active equipment (CPE - Customer Premises Equipment)

### Features

- Dust-proof design with IP-45 protection level
- Integrated with adapter holder
- Manage 1 core in one box
- Easy for installation
- Suitable for fusion splice or mechanical splice
- Fire-proof and anti-aging material



### Product description

The Wall Outlet is used to terminate optical installation cables to pigtails at the subscriber's premises. It is mounted on the wall. The cable is fed to the wall outlet from the sides, bottom side or from the back. The wall outlet consists of body, splice cassette, and cover. The body is fixed to the wall with screws and is used for entrance and routing of the optical installation cable and mounting of optical adapters. The purpose of the splice cassette is to take excess lengths of the incoming optical cables as well as the pigtails and to fix splice protectors (1-2 pcs). Heat-shrink splice protectors or cold splice protectors (mechanical splices) can be fixed easily on the splice cassette. A cover protects the contents of the wall outlet and is fixed to the wall outlet without screws. The construction of the wall outlet ensures a minimum bending radius for the pigtails. The wall outlet is made of white color.

### Technical specification :

Number of input cable positions	1
Input cable diameter	up to 7mm
Max. capacity	2 fibers
Operating temperature	-40°C to + 70°C
Material	PolyCarbonate
Weight	77g
Dimensions (LxWxH) (mm)	115x85,5x22,5

### Packing information

Wall outlet is packing in carton box with following dimensions :  
120mm x 90mm x 225mm·(LxWxH)

### Ordering information:

Wall outlet box for 1 core and 1 SC sx adapter, w splice cassette, empty	EC05.200012.000
Wall outlet box for 1 core and 1 SC sx adapter, w splice cassette, 1 mounted SC/SM adapter	EC05.200012.001
Wall outlet box for 1 core and 1 SC sx adapter, w splice cassette, 1 mounted SC/APC adapter	EC05.200012.002
Wall outlet box for 1 core and 1 SC sx adapter, w splice cassette, 1 mounted SC/APC adapter with shutter	EC05.200012.003

**Field of Application**

Designed for FTTH applications, the Wall Outlet is used to terminate optical cables to pigtails at the subscribers premises. It is mounted on the wall. The cable is fed to the wall outlet from the top, bottom side or from the back. A patchcord leads from the wall outlet to the active equipment (CPE - Customer Premises Equipment)

**Features**

- Dust-proof design with IP-45 protection level
- Integrated with adapter holder
- Manage 4 core in one box
- Easy for installation
- Suitable for fusion splice or mechanical splice
- Fire-proof and anti-aging material



**Product description**

The Wall Outlet is used to terminate optical installation cables to pigtails at the subscriber's premises. It is mounted on the wall. The cable is fed to the wall outlet from the top side, bottom side or from the back. The wall outlet consists of body, splice cassette, and cover. The body is fixed to the wall with screws and is used for entrance and routing of the optical installation cable and mounting of optical adapters without flange. The purpose of the splice cassette is to take excess lengths of the incoming optical cables as well as the pigtails and to fix splice protectors (1-4 pcs). Heat-shrink splice protectors or cold splice protectors (mechanical splices) can be fixed easily on the splice cassette. A cover protects the contents of the wall outlet and is fixed to the wall outlet without screws. The construction of the wall outlet ensures a minimum bending radius for the pigtails. The wall outlet is made of white color.

**Technical specification :**

Number of input cable positions	4
Input cable diameter	up to 7mm
Max. capacity	4 fibers
Operating temperature	-40°C to + 70°C
Material	PolyCarbonate
Weight	70g
Dimensions (LxWxH) (mm)	100x80x29

**Packing information**

Wall outlet is packing in carton box with following dimensions :  
105mm x 85mm x 35mm (LxWxH)

**Ordering information:**

Wall box with splice cassette, empty	EC05.200020.000
Wall box with splice cassette, 4 mounted SC/SM adapter	EC05.200021.001
Wall box with splice cassette, 4 mounted SC/APC adapter	EC05.200022.002
Wall box with splice cassette, 4 mounted SC/APC adapter with shutter	EC05.200022.003
Wall box with splice cassette, 1 mounted SC/APC adapter with shutter+1 SC/APC pigtail,1m,red	EC05.200022.004
Wall box with splice cassette, 2 mounted SC/APC adapter with shutter+2 SC/APC pigtail,1m,red/green	EC05.200022.006